



16 CH 400 IPS REAL-TIME DVR

DIGIMASTER



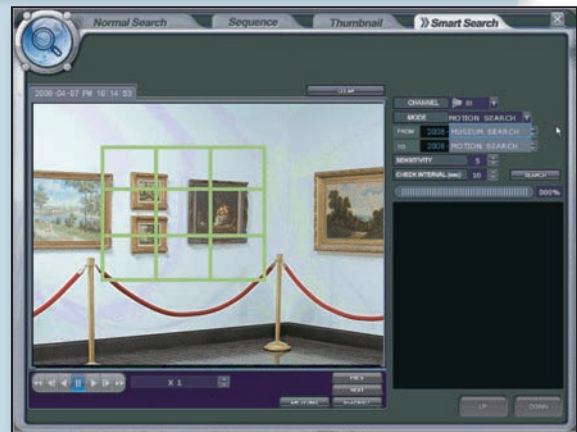
FEATURES

- 400 IPS Real-Time 16-Channel DVR
- USB Mouse & Keyboard Control
- High Image Quality - XVGA Live Display
- Efficient MPEG-4 Compression
- 4 Spot Outputs with Quad Display
- Advanced Smart & Panorama Search
- Archive to DVD or Thumb Drive
- Remote Viewing & Playback with PTZ Control
- Panic button recording mode with adjustable settings per channel
- Hard disk drives engineered for Digital Video Surveillance optimize performance and improve reliability

SMART SEARCH TECHNOLOGY

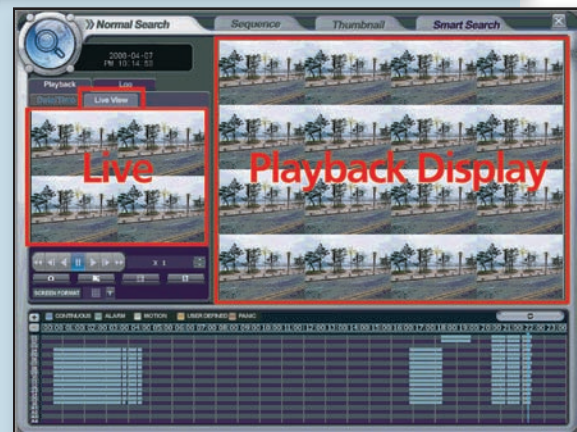
Smart Search gives you advanced features typically found in higher priced DVRs:

- Smart Search and Motion Search modes – specify areas of recorded images as “hotspots” and quickly recall video segments based on activity in the specified area by using an object recognition algorithm.
- Frame-by-Frame Search – Scan through video segments frame-by-frame, previewing up to 16 individual frames at once in an intuitive on-screen interface.
- Time-Lapsed Panorama Search – Simultaneously review up to 8 “windows” of specified times within recorded video of each channel, for more efficient search.



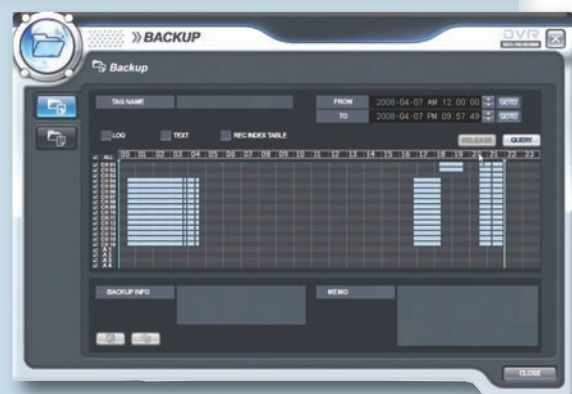
LIVE VIEW / PLAYBACK / SEARCH

- Monitor up to 16 channels of live video, audio, alarm sensors, event log, system information, and more!
- Enhanced Search and Playback features allow simultaneous viewing of live and playback video, in a variety of multiplexed modes, with recording timeline and event log information.
- Right-click your USB mouse within Live View Mode, for easy access to all of your DVR features and functions.



ARCHIVING & BACKUP

- Intuitive Timeline Interface allows you to select a range of video quickly and easily, measure how much data it is, then mark it and schedule it for archiving, all with a few mouse clicks.
- Backup your video archives to a variety of media types, such as CD-R/W, DVD-R/W and USB Memory Stick.
- Allows quick and easy transfer of snapshot images and video clips, to bring them over to any Windows PC and view with Windows Media Player or Client Software.



Designed to work seamlessly with our full line of CCTV Products



RECORDING CONFIGURATION

- System provides detailed recording configurations for Normal, Intensive, and Panic Recording Modes, with settings for Continuous, Alarm, Motion and User-Defined Event recording.
- Pre- and Post-Event Recording buffers help to preserve important video data that may occur before and after Alarm and Motion events are detected by the system.
- Recording schedules are adjustable per-channel, per-hour, and can be customized for daily or weekly cycles.



PTZ CONTROL

- The DIGIMASTER-RT 400ips platform supports most of the major industry PTZ devices and protocols.
- Adjustable speeds and sensitivities for Pan, Tilt, Zoom, Iris and Focus for each individual channel; allows Auto Focus and Auto Iris for supported devices.
- PTZ mouse control function provides sensitive control of PTZ devices by using simple click-and-drag mouse movements with your USB mouse.

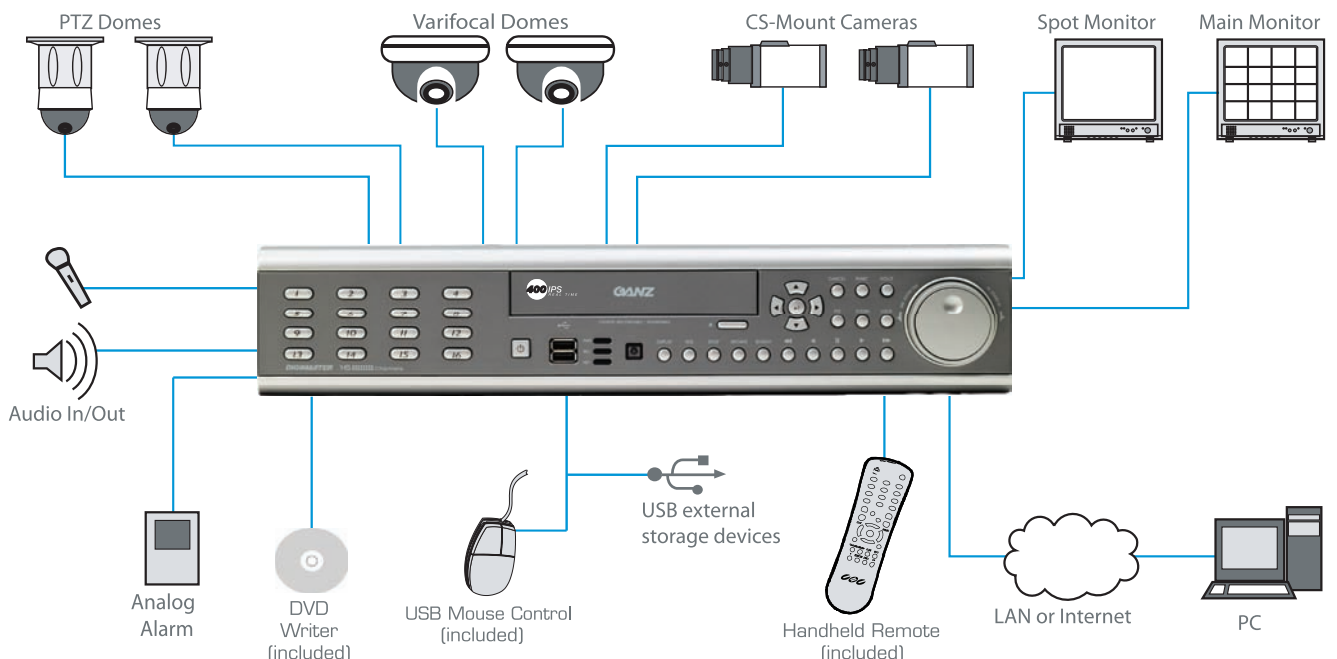


DISPLAY CONFIGURATION

- Live View or Sequence in either 1,4,8,9 or 16-screen mode on the main monitor.
- Create customized Display Screen Templates, that can be used in Live View Mode, Sequence Mode, or on any of 4 Spot Monitor Outputs.
- Individually-Sequenced Spot Monitor Outputs allow customizable sequences of single-channel or quad views on each spot monitor.



SYSTEM CONFIGURATION



DIGIMASTER-RT / DR16NRT SPECIFICATIONS

DIGIMASTER-RT / DR16NRT SPECIFICATIONS		
Operation	PENTAPLEX	PENTAPLEX performance (Simultaneous Live Display/ Recording/ Playback/ Archiving/ Networking effectively without interfering each other operations)
Video In	Channels	16
	Connection	BNC, 1.0Vpp composite 75ohm balanced
	Loop through	BNC, 1.0Vpp composite 75ohm unbalanced, auto termination
Audio In	Channels	4 - line level unbalanced
Main Displays	BNC	1.0Vpp composite 75ohm unbalanced
	VGA	15 pin D-SUB 1024 x 768 @ 60Hz
	Screen display modes	1, 4, 9, 16 - User defined channels for each model
	Sequence	Adjustable dwell time, user defined sequences
Spot Displays	Channels	4 fully programmable
	Connection	BNC, 1.0Vpp composite 75ohm unbalanced
	Display mode	Full screen sequence, adjustable dwell time
Audio Out	Channels	1
	Connection	RCA, line level unbalanced
External Alarm	Inputs	16 (16 Open collector TR), NO or NC common ground
	Outputs	16, high (+5V) or low (0V) selectable, common ground
User Interface	On screen display	GUI, alpha blending
	Control	Front panel / IR Remote / USB Mouse
Recording	Video CODEC	MPEG-4
	Resolution options for each channel	CIF (352 x 288), 2 CIF (704 x 288), D1 (704 x 576)
	Maximum total frame rate	400 FPS (PAL)
	Image quality	Highest, High, Standard, Low
	Pre-event recording	5 seconds max
	Recording modes	Continuous / Motion detection / Alarm / User event / Panic
	Frame rate options for each channel	25 - 12 - 6 - 3 - 2 - 1
	Schedule Configurable recording time limits	Weekly / Daily per Camera
	Audio	Audio inputs independently assigned to each channel
	Motion detection	16 x 16 selectable grid with 10 levels of sensitivity
	Covert recording	Yes, selectable by channel
	Camera title	English and Numeral
Playback	Search method	Calendar / timeline, event log, Sequence, Thumbnail, Smart Search
	Split screen display modes	1,4,16
	Audio synchronization	Yes, any frame rate
Archiving	Storage	Backup to CD/DVD media via DVD±RW, USB thumb drive (included) or Network
	Format	Watermarked AVI, JPEG
	Archive data	Independent channels selection (video / audio), backup log, event log
Time	Time zone	Worldwide, Selectable
	DST	Yes
	RS-485	Multi protocol, baud rate and speed control for each channel
PTX System	Watchdog	Yes
	Abnormal shutdown detection	Yes, with system auto recovery
	HDD health monitoring	Yes, S.M.A.R.T temperature sensor
Network	Connection	RJ45, 10 / 100 Ethernet
	Two way network audio	Yes
	Bandwidth management	Yes
	Remote client	Client software (included), Remote configuration, Remote PTZ control, Email event notification
	Storage	4 x HDD maximum
	Recording options	Write once / Overwrite
Event Handling	Source	Alarm in, motion detection, video loss, HDD error, User event
	Action	Record, alarm out, email notification, log, remote client popup, buzzer, full screen
Security	User levels	ADMIN, MANAGER, USER
	Key Lock	Yes, password protected
Physical	Dimensions	+5 °C ~ +50 °C (10 ~ 80 % rel. humidity)
	Weight	Approx. 12 kg
	Operating Temperature	428 mm x 93 mm x 475 mm

All specifications are subject to change without notice